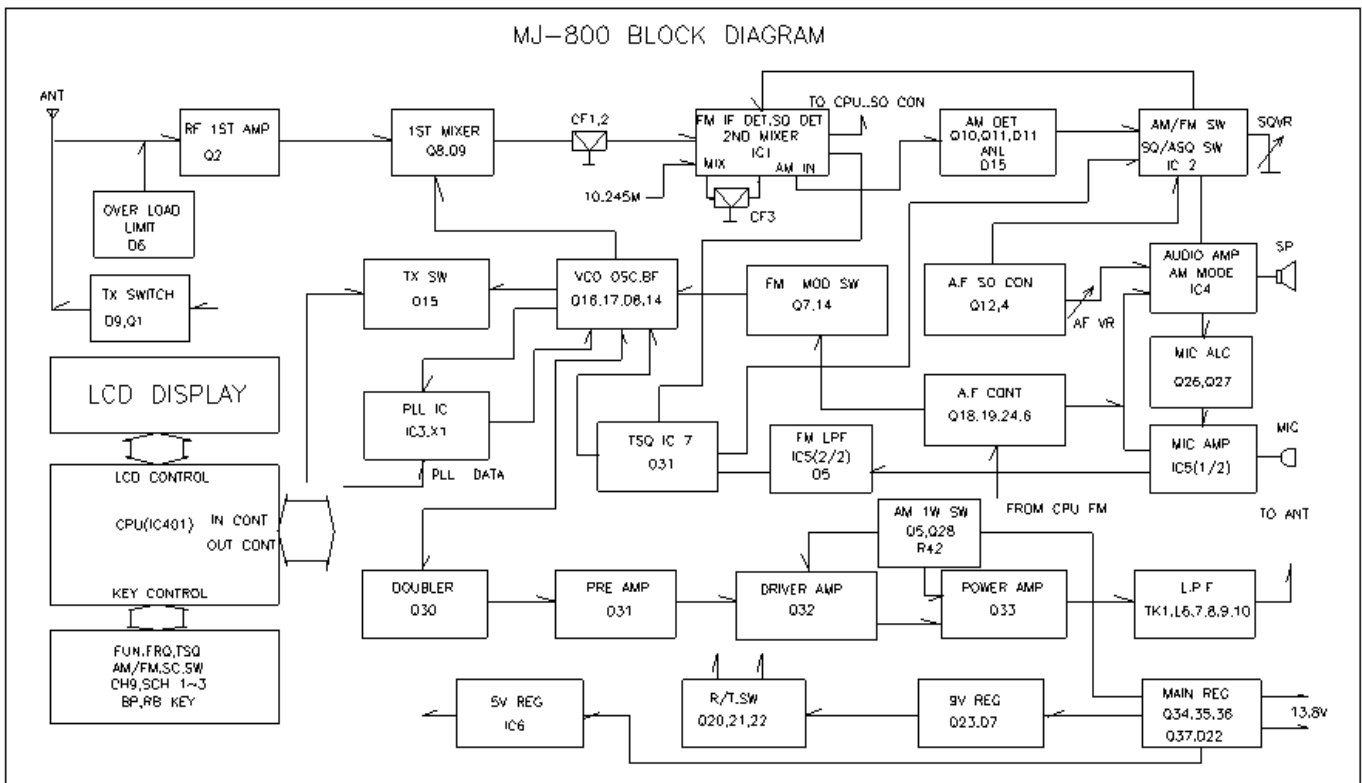


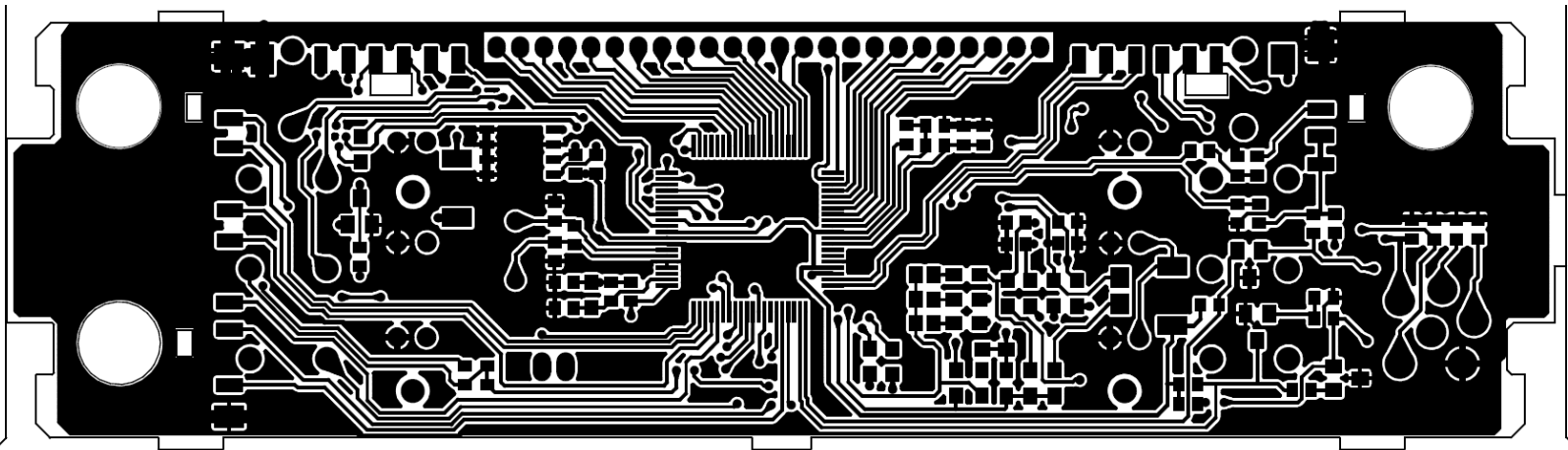


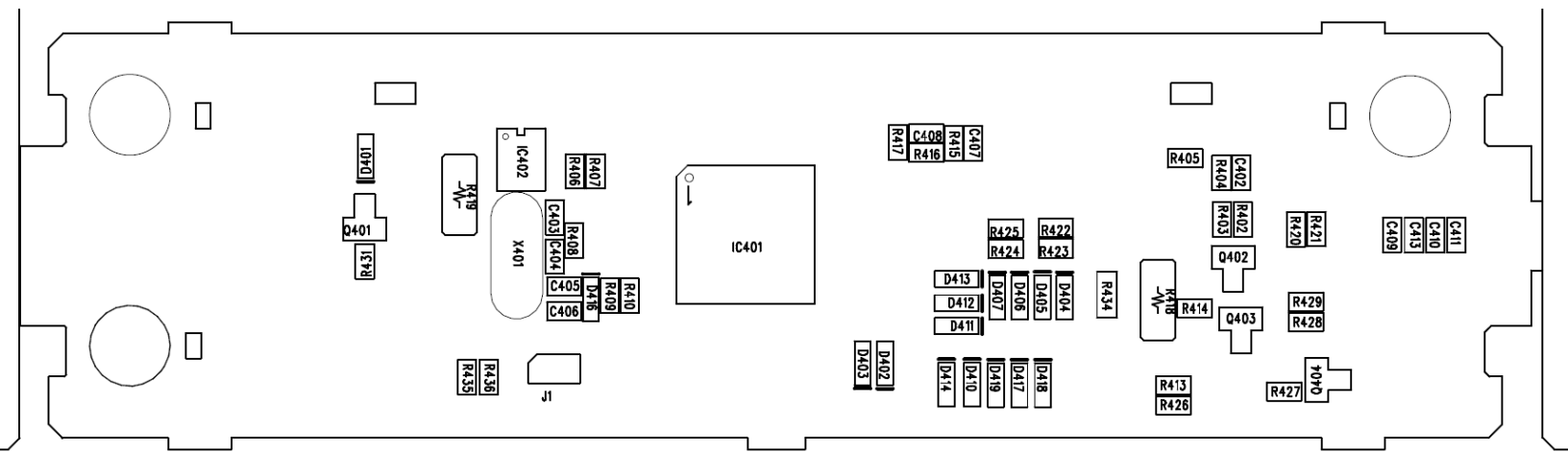
CB RADIO

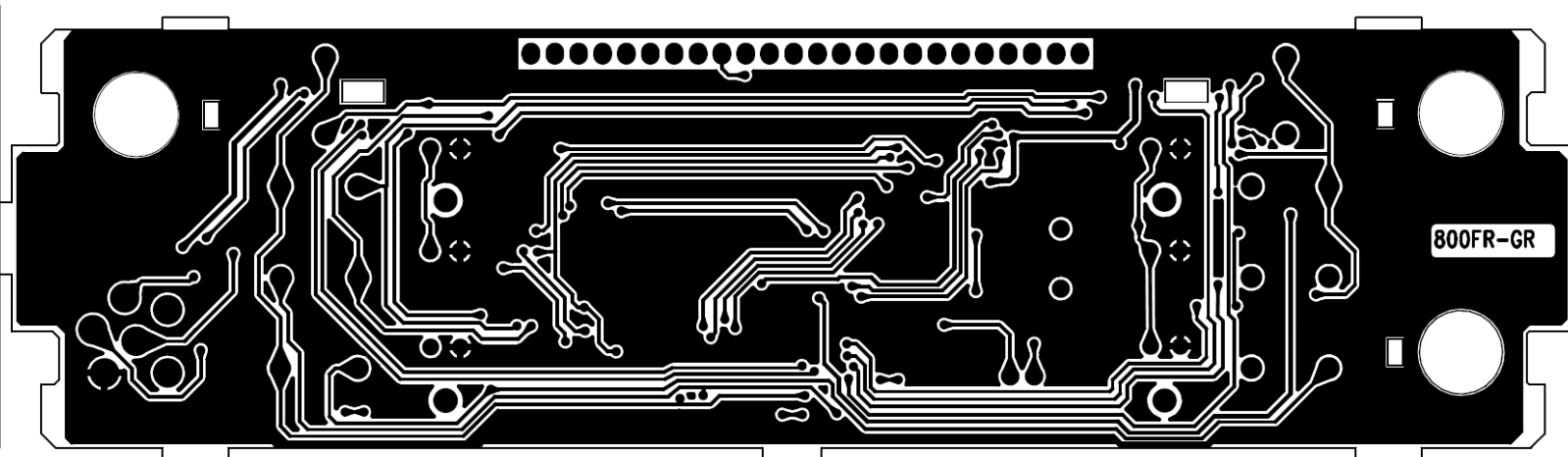
Service Manual AE 6690

MJ-800 BLOCK DIAGRAM

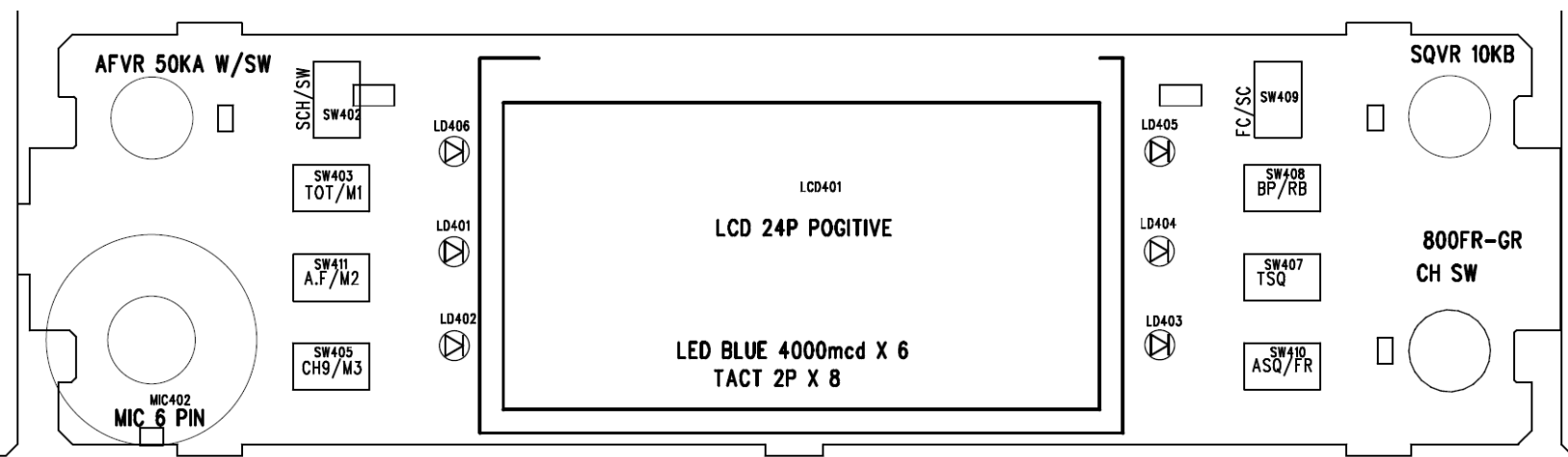








800FR-GR



AFVR 50KA W/SW

SCH/SW
SW402

SW403
TOT/M1

SW411
A.F/M2

SW405
CH9/M3

LD406

LD401

LD402

LCD401

LCD 24P POGITIVE

LED BLUE 4000mcd X 6
TACT 2P X 8

LD405

LD404

LD403

FC/SC
SW409

SW408
BP/RB

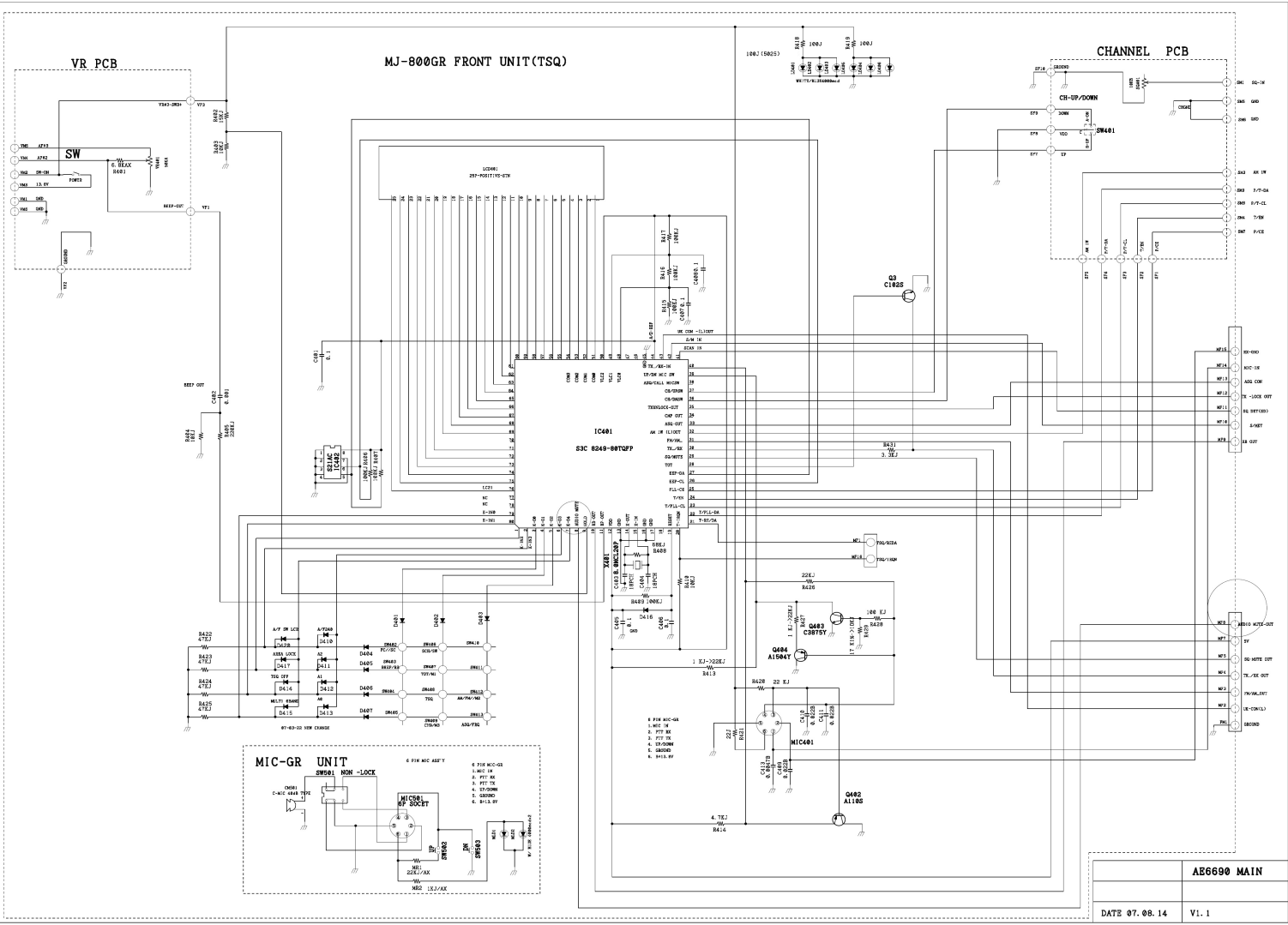
SW407
TSQ

SW410
ASQ/FR

SQVR 10KB

800FR-GR
CH SW

MIC 402
MIC 6 PIN



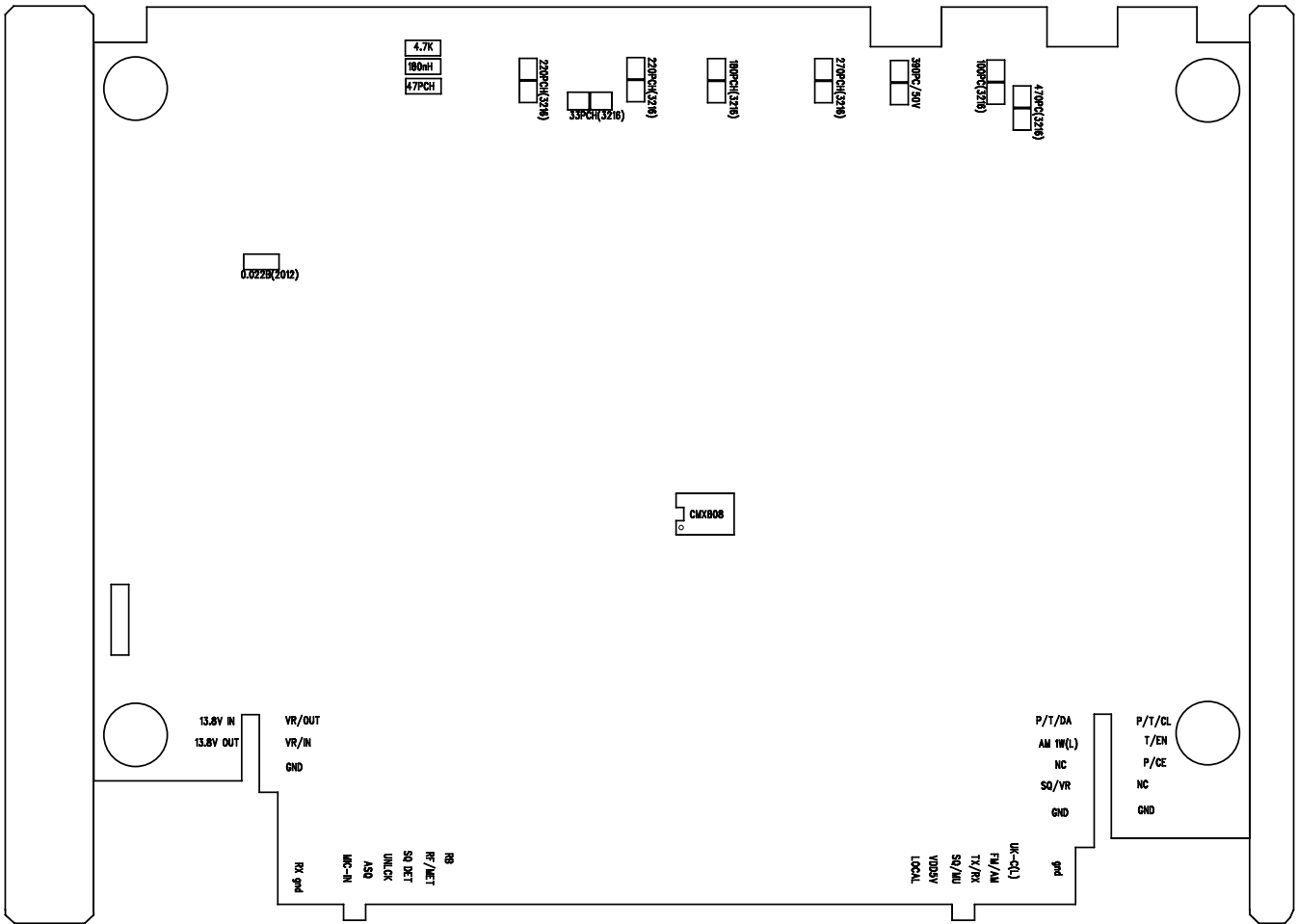
AB6690 MAIN	
DATE 07.08.14	V1.1

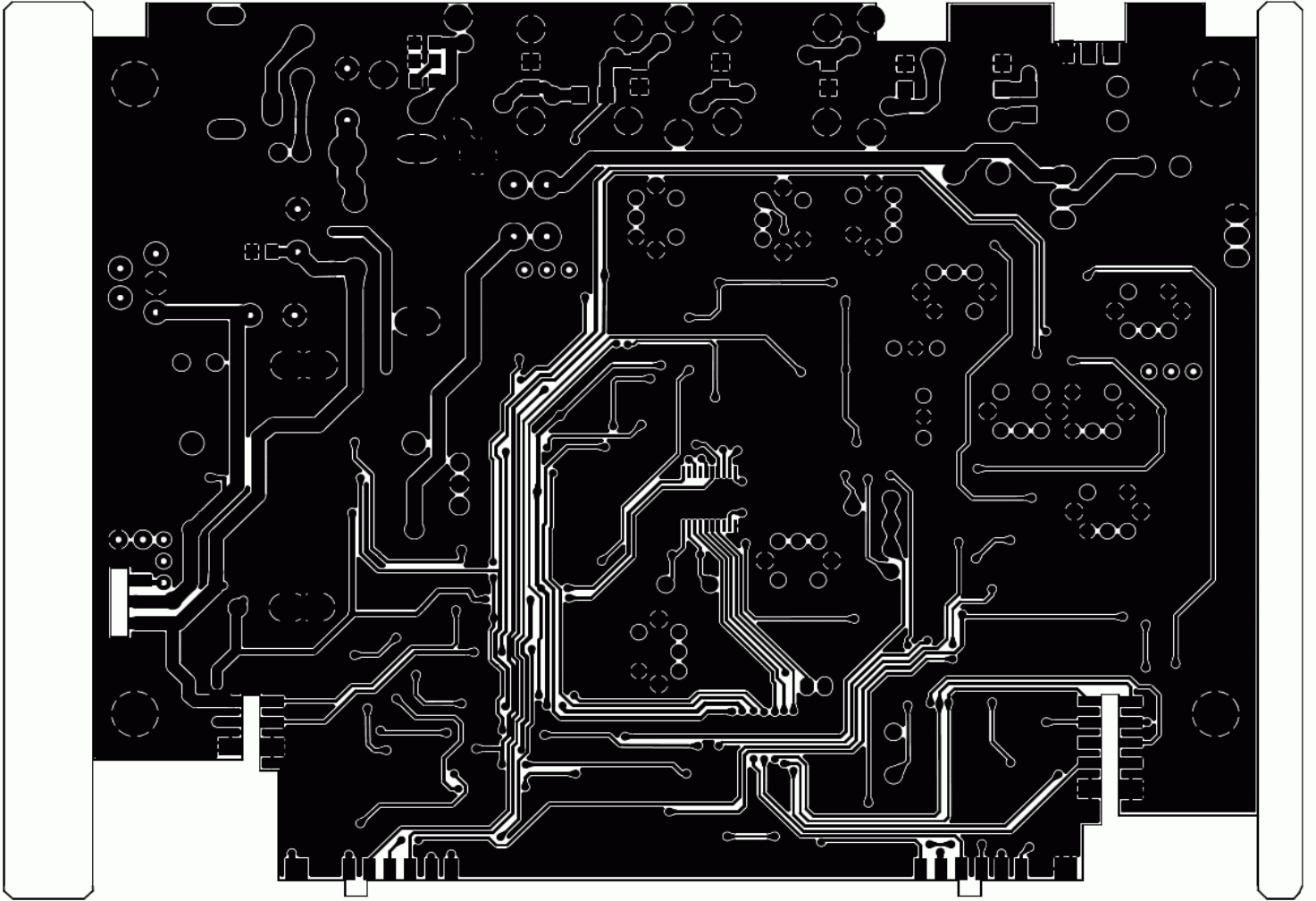
-----|
AE 6690 FRONT, VR MIC PART LIST 2007.06.05

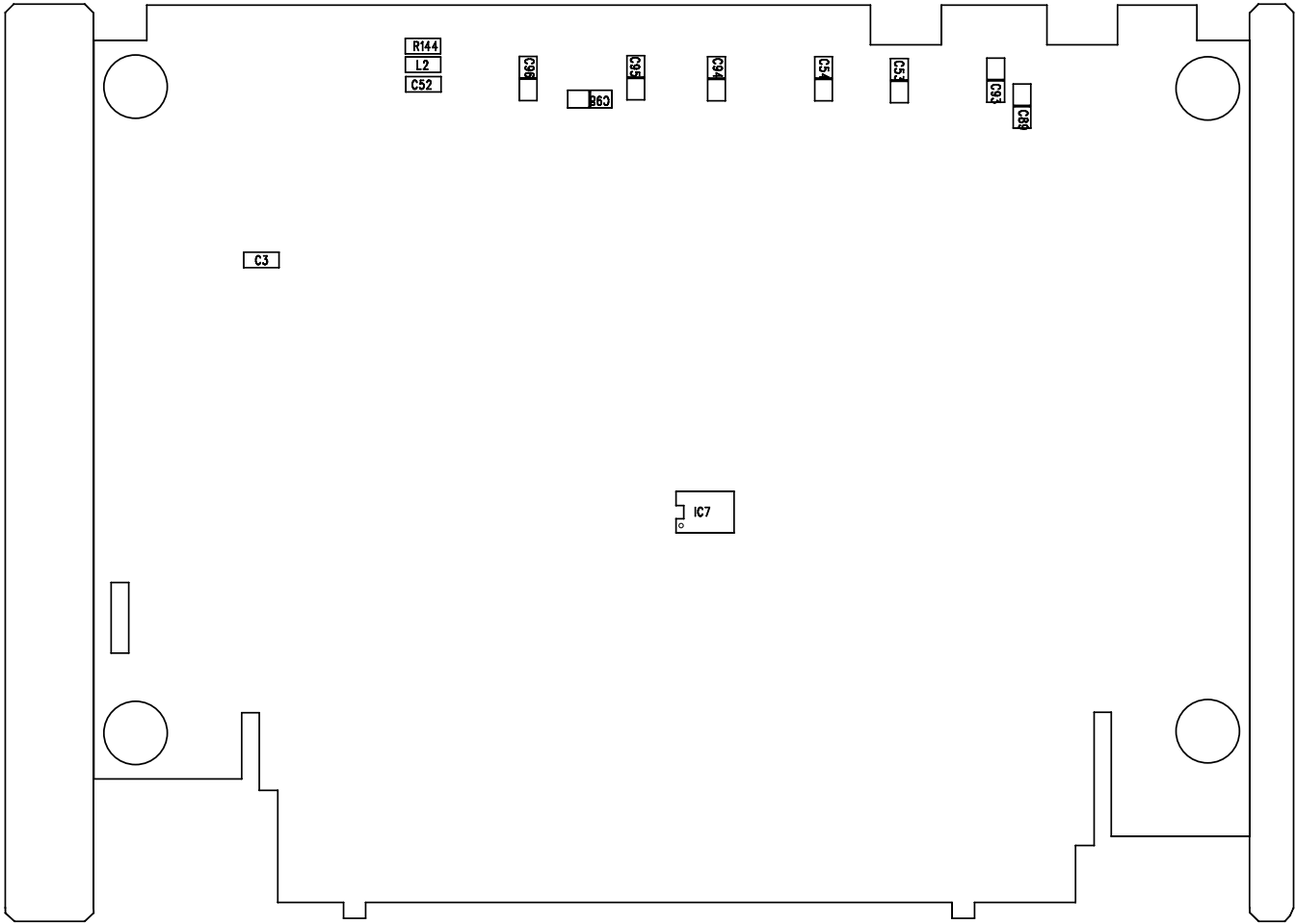
Item	Qty	Reference	Part Name	Manufacturer	Description
1	1	C402	C-SMD,0.001B		
2	1	C413	C-SMD,0.0047B		
3	3	C409-411	C-SMD,0.022B		
4	5	C401	C-SMD,0.1B		
		C405-408			
5	2	C403-404	C-SMD,18PCH		
6	16	D401-407	D-A,KDS160		
		D410-417			
		D420			
7	1	IC401	IC80TFP,S3C		CPU
			8249-80TQFP		
8	1	IC402	ICP08,S21AC		EEPROM
9	1	LCD401	LCD25PA		MJ-800
10	6	LD401-406	3PIE ,BLUE		
11	1	MIC401	6P CONNECTOR		
12	1	MIC501	MIC-C,6P SOCKET		MIC ASSY
13	1	DY501	MIC-D6,		MIC ASSY
			150/30PIE		
14	2	R413 R427	R-SMD,1 KJ		
15	1	R428	R-SMD,100 K1%		
16	2	R418-419	R-SMD,		
			56J (5025)		
17	6	R406-407	R-SMD,100KJ		
		R409			
		R415-417			
18	3	R403-404	R-SMD,10KJ		
		R410			
19	1	R402	R-SMD,15KJ		
20	1	R429	R-SMD,16.9K1%		

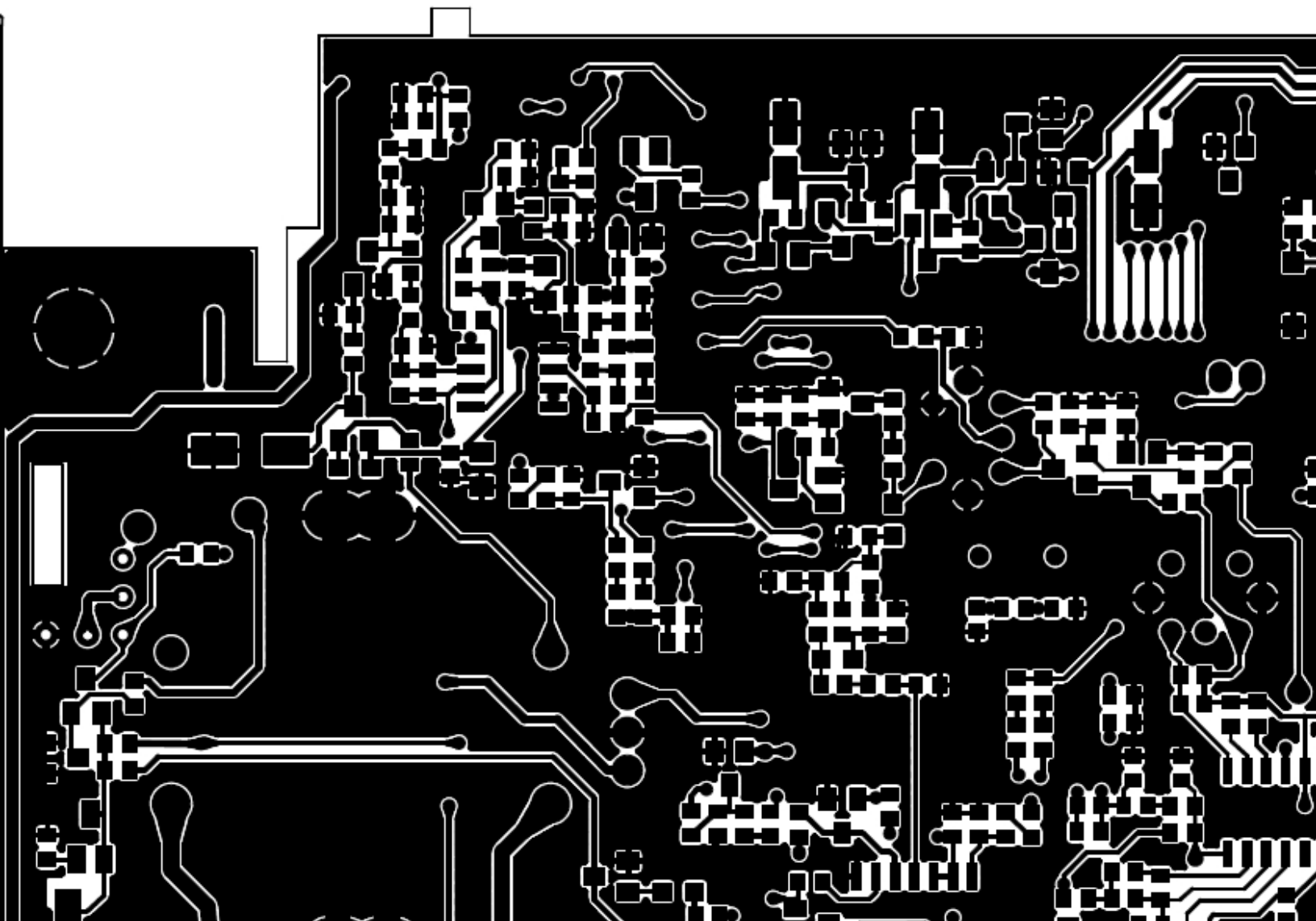
21	1	R420	R-SMD,22 KJ			
22	1	R405	R-SMD,220KJ			
23	1	R421	R-SMD,22J			
24	1	R426	R-SMD,22K1%			
25	1	MR1	BULK ,22KJ/AX		MIC ASSY	
26	1	R431	R-SMD,3.3KJ			
27	1	R414	R-SMD,4.7KJ			
28	4	R422-425	R-SMD,47KJ			
29	1	R401	BULK ,6.8KAX		VR ASSY	
30	1	R408	R-SMD,68KJ			
31	1	VR PCB	FR-4 (PRO-7H)		VR ASSY	
32	1	SW501	SW-6A,NON		MIC ASSY	
			-LOCK			
33	1	SW503	TACT-4P,DN		MIC ASSY	
34	1	SW502	TACT-4P,UP		MIC ASSY	
35	1	SW401	SW-ENCD,		VR ASSY	
			CH-UP/DOWN			
36	1	SW412	TACT,AM/FM//M2			
37	1	SW413	TACT,ASQ/FRQ			
38	1	SW403	TACT,BEEP/RB			
39						
40	1	SW409	TACT,CH9/M3			
41						
42	1	SW402	TACT,FC//SC			
43						
44						
45	1	SW406	TACT,SCH/SW			
46	1	SW407	TACT,TOT/M1			
47	1	SW408	TACT,TSQ			
49	1	MIC PCB	FR-4		MJ-300MIC-GR PCB	
50	1	FRONT PCB	FR-4		MJ-800FR-GR PCB	

51	1					
52	1	Q402	TR,KRA110S			
53	1	Q404	TR,KTA1504Y			
54	1	Q3	TR,KRC102S			
55	1	Q403	TR,KTC3875Y			
56	1	SQ401	VR-9PIE ,10KB		SQ VR, VR ASSY	
57	1	VR401	VR-9PIE ,50KA	W/SW	AF VR, VR ASSY	
58	1	X401	XTL-11X4.5,			
			8.0MCL20P			



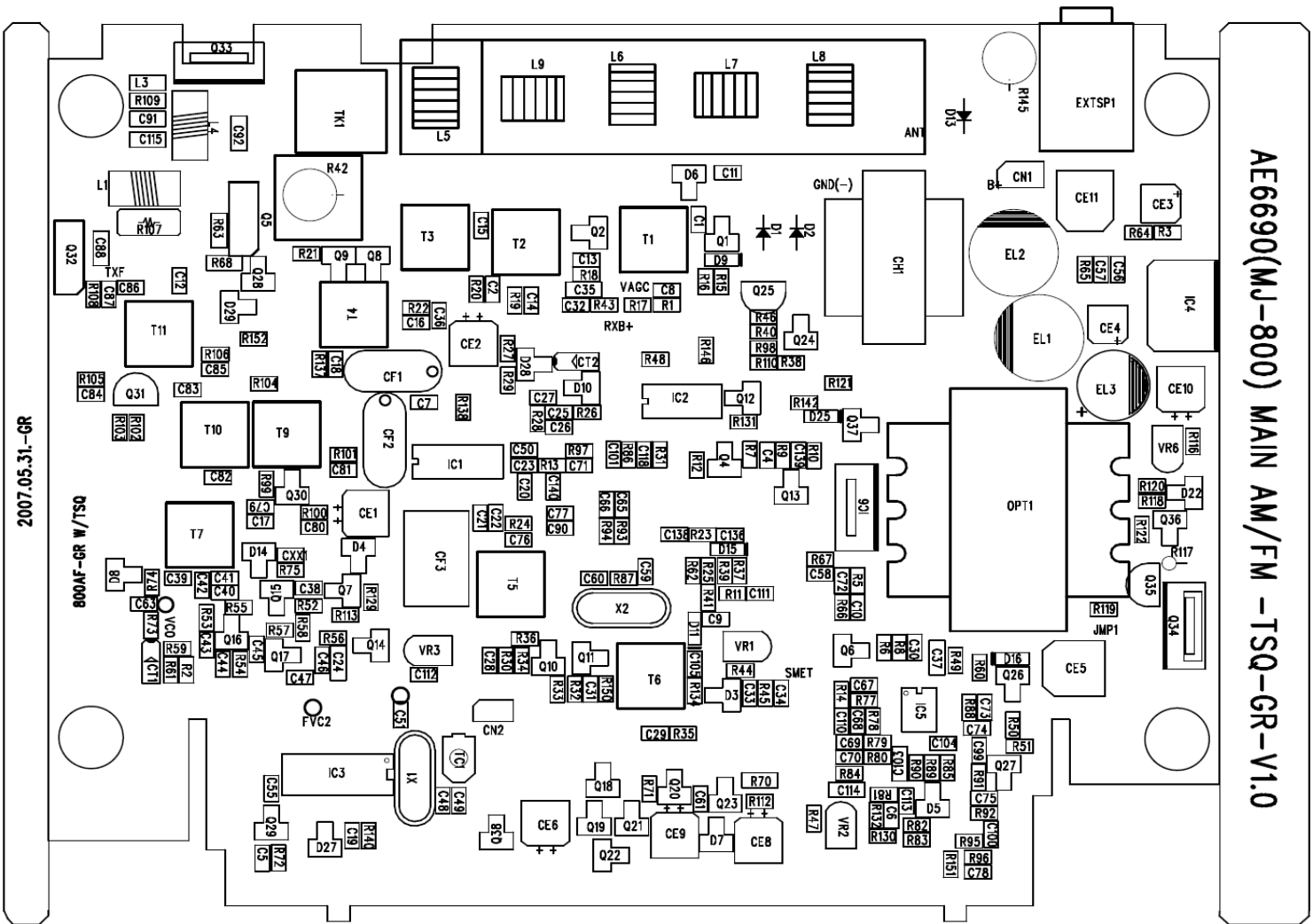






2007.05.31.-GR

AE6690(MJ-800) MAIN AM/FM -TSQ-GR-V1.0



800AF-GR W/TSQ

SMET

EXTSP1

ANT

CH1

OPT1

JMP1

FVC2

VR3

VR1

VR2

VR4

VR5

VR6

VR7

VR8

VR9

VR10

VR11

VR12

VR13

VR14

VR15

VR16

VR17

VR18

VR19

VR20

VR21

VR22

VR23

VR24

VR25

VR26

VR27

VR28

VR29

VR30

VR31

VR32

VR33

VR34

VR35

VR36

VR37

VR38

VR39

VR40

VR41

VR42

VR43

VR44

VR45

VR46

VR47

VR48

VR49

VR50

VR51

VR52

VR53

VR54

VR55

VR56

VR57

VR58

VR59

VR60

VR61

VR62

VR63

VR64

VR65

VR66

VR67

VR68

VR69

VR70

VR71

VR72

VR73

VR74

VR75

VR76

VR77

VR78

VR79

VR80

VR81

VR82

VR83

VR84

VR85

VR86

VR87

VR88

VR89

VR90

VR91

VR92

VR93

VR94

VR95

VR96

VR97

VR98

VR99

VR100

VR101

VR102

VR103

VR104

VR105

VR106

VR107

VR108

VR109

VR110

VR111

VR112

VR113

VR114

VR115

VR116

VR117

VR118

VR119

VR120

VR121

VR122

VR123

VR124

VR125

VR126

VR127

VR128

VR129

VR130

VR131

VR132

VR133

VR134

VR135

VR136

VR137

VR138

VR139

VR140

VR141

VR142

VR143

VR144

VR145

VR146

VR147

VR148

VR149

VR150

VR151

VR152

VR153

VR154

VR155

VR156

VR157

VR158

VR159

VR160

VR161

VR162

VR163

VR164

VR165

VR166

VR167

VR168

VR169

VR170

VR171

VR172

VR173

VR174

VR175

VR176

VR177

VR178

VR179

VR180

VR181

VR182

VR183

VR184

VR185

VR186

VR187

VR188

VR189

VR190

VR191

VR192

VR193

VR194

VR195

VR196

VR197

VR198

VR199

VR200

VR201

VR202

VR203

VR204

VR205

VR206

VR207

VR208

VR209

VR210

VR211

VR212

VR213

VR214

VR215

VR216

VR217

VR218

VR219

VR220

VR221

VR222

VR223

VR224

VR225

VR226

VR227

VR228

VR229

VR230

VR231

VR232

VR233

VR234

VR235

VR236

VR237

VR238

VR239

VR240

VR241

VR242

VR243

VR244

VR245

VR246

VR247

VR248

VR249

VR250

VR251

VR252

VR253

VR254

VR255

VR256

VR257

VR258

VR259

VR260

VR261

VR262

VR263

VR264

VR265

VR266

VR267

VR268

VR269

VR270

VR271

VR272

VR273

VR274

VR275

VR276

VR277

VR278

VR279

VR280

VR281

VR282

VR283

VR284

VR285

VR286

VR287

VR288

VR289

VR290

VR291

VR292

VR293

VR294

VR295

VR296

VR297

VR298

VR299

VR300

VR301

VR302

VR303

VR304

VR305

VR306

VR307

VR308

VR309

VR310

VR311

VR312

VR313

VR314

VR315

VR316

VR317

VR318

VR319

VR320

VR321

VR322

VR323

VR324

VR325

VR326

VR327

VR328

VR329

VR330

-----|
AE6690 MAIN PART LIST 2007 . 06 . 05

Item	Qty	Reference	Part Name	Manufacturer	Description
1	1	J2	ANTCONNECTOR		
2	4	C1 C74	C-SMD,0.001B		
		C86 C105			
3	1	C20	C-SMD,0.0022B		
4	1	C56	C-SMD,0.0047B		
5	9	C8 C14	C-SMD,0.01B		
		C16 C36			
		C38 C62			
		C70 C81			
		C85			
6	14	C2 C5-6	C-SMD,0.01B		
		C9 C13			
		C58 C64			
		C66 C69			
		C75 C78			
		C84 C112			
		C139			
7	1	C140	C-SMD,0.01B		
8	2	C92 C3	C-SMD,		
			0.022B/50V		
			(2012)		
9	11	C10	C-SMD,0.022B		
		C29-30			
		C32 C46			
		C57 C61			
		C72 C80			
		C102 C118			
10					
11	1	C68	C-SMD,0.068B		

12	3	C19	C-SMD,0.1B			
		C21-22				
13	10	C4 C23	C-SMD,0.1B			
		C27 C63				
		C65 C77				
		C90 C101				
		C110 C136				
14	4	C99-100	C-SMD,0.33B			
		C104 C113				
15	2	C28 C47	C-SMD,100PCH			
16	1	C93	C-SMD,			
			100PCH/50V(321			
			6)			
17	1	C41	C-SMD,10PCH			
18	3	C44 C71	C-SMD,150PCH			
		C73				
19	1	C97	C-SMD,			
			150PCHDISK/50V		ANT CONNECTOR	
20	1	C76	C-SMD,180PCH			
21	1	C94	C-SMD,			
			180PCH(3216)			
22	3	C55	C-SMD,18PCH			
		C59-60				
23	2	C33-34	C-SMD,1uB			
24	2	C31 C111	C-SMD,1uB			
25	1	C39	C-SMD,220PCH			
26	1	C95	C-SMD,220PCH			
			/50V(3216)			
27	1	C96	C-SMD,			
			220PCH/50V(321			
			6)			
28	1	C43	C-SMD,270PCH			

29	1	C54	C-SMD,			
			270PCH/50V(3216)			
30	3	C11 C17	C-SMD,27PCH			
		C49				
31	1	C42	C-SMD,30PCH			
32	3	C26 C79	C-SMD,330PCH			
		C83				
33	3	C25 C40	C-SMD,33PCH			
		C51				
34	1	C98	C-SMD,			
			33PCH/50V(3216			
)			
35	1	C53	C-SMD,			
			390PCH/50V(3216)			
36	1	C7	C-SMD,3PCH			
37	5	C24 C35	C-SMD,			
		C37 C103	4.7uB/12V(2012)			
		C114				
38	1	C50	C-SMD,470PCH			
39	1	C88	C-SMD,			
			470PCH(2012)			
40	1	C89	C-SMD,			
			470PCH/50V(321			
			6)			
41	1	C48	C-SMD,47PCH			
42	1	C52	C-SMD,			
			47PCH(2012)			
43	2	C18 C45	C-SMD,5PCH			
44	1	C67	C-SMD,680PCH			
45	1	C87	C-SMD,68PCH			
46	2	C91 C115	C-SMD,			
			68PCH(2012)			

47	1	C15	C-SMD,7PCH		
48	1	C82	C-SMD,8PCH		
49	1	C12	C-SMD,C820PCH		
50	2	CF1-2	CF-A,10.7MHZ	+-7.5KHz	
51	1	CF3	CF-A,455HT		
52	1	TK1	COIL,TANK		
53	1	CN2	POWER CORD	POW ASSY W/FUSE	
54	2	CN1	2.5PITCH,IN-SP	SP CONNECTOR ASSY 160mm	
55	1	CN4	2.0PITCH 2P	CONT CONNECTOR ASSY 70mm	
56	1	TC1	CV-SMD,20P		
57	2	D2 D13	BALK,1N4002		
58	1	D1	BALK,1N5401		
59	1	D11	D-,KDR357		
60	4	D9 D15-16	D-,KDS160		
		D25			
61	3	D3 D6 D10	D-,KDS226		
62	2	D5 D28	D-,KDS181		
63	2	D4 D29	D-,KDS184		
64	2	D8 D14	D-V,KDV251		
65	1	D27	ZENER,3.0VB		
66	1	D22	ZENER,5.6VB		
67	1	D7	ZENER,9.1VB		
68	1	CT1	TANTAL,1/16A		
69	1	CE4	E-A,1/16		
70	1	CE11	CE,100/16		
71	1	EL1	EL,1000/16V		
72	1	EL2	EL,1000/16V		
73	1	CE3	CE ,22/16		
74	1	CT2	TANTAL,3.3/16A		
75	3	CE2 CE8-9	CE,33/16		
76	1	EL3	EL,330/16		

77	4	CE1 CE5-6 CE,47/16			
		CE10			
78	1	IC6	TO-220A78M05		500mA
79	2	IC5	IC5,KIA4558F		
80	1	IC2	IC14,MC4066		
81	1	IC3	LC7152M		
82	1	IC7	ICG20DS,CMX808		
83	1	IC1	WP ,MC3361		
84	1	T3	IFT,047		
85	1	T6	IFT,81450A		
86	1	T7	IFT,81460N		
87	1	T4	IFT,048		
88	1	T1	IFT6,81410A		
89	1	T2	IFT6,81420		
90	2	T9-10	IFT6,81480		
91	1	T11	IFT6,LX18		
92	1	T5	IFT-5,036		
93	1	SP	77PIE 3W 8OHM		
94	1	L4	PICKING COIL		
95	1	L2	CHIP INDECTOR		
			180nH(2012)		
96	1	L3	CHIP INDECTOR		
			6.8uH(2012)		
97	1	L1	SPRING ,6T		
98	1	L7	SPRING,7-1/2T		
99	4	L5-6 L8-9 SPRING,8-1/2T			
100	3	R38 R121 R-SMD,0J			
		R125			
101	1	R58	R-SMD,1.5KJ		
102	1	R28	R-SMD,1.5MJ		
103	1	R68	R-SMD,		
			100(2012)		

104	5	R19 R47	R-SMD,100J			
		R84				
		R100-101				
105	4	R15 R45	R-SMD,100KJ			
		R85 R138				
106	1	R42	CEMENT,10J/5W			
			CEMENT			
107	1	R44	R-SMD,10K			
108	16	R7 R9 R37	R-SMD,10KJ			
		R48				
		R59-61				
		R66-67				
		R75				
		R77-79				
		R92 R94				
		R129				
109	1	R107	R-SMD,			
			120J(5025)			
110	1	R117	BALK ,150/1W			
111	2	R62 R88	R-SMD,150KJ			
112	1	R70	R-SMD,			
			15J(2012)			
113	3	R27 R51	R-SMD,15KJ			
		R147				
114	1	R63	R-SMD,1KJ(2012)			
115	6	R18 R30	R-SMD,1KJ			
		R50 R54				
		R95 R134				
116	1	R87	R-SMD,1MJ			
117	1	R52	R-SMD,10KJ			
118	1	R64	R-SMD,2.2J			

119	1	R23	R-SMD,2.2KJ			
120	9	R2 R4 R10	R-SMD,2.2KJ			
		R16 R36				
		R65 R71				
		R91 R137				
121	5	R1 R20-21	R-SMD,2.7KJ			
		R46 R96				
122	3	R22 R33	R-SMD,220J			
		R120				
123	3	R53 R57	R-SMD,220KJ			
		R99				
124	1	R150	R-SMD,22KJ			
125	9	R5 R8 R13	R-SMD,22KJ			
		R73-74				
		R86 R97				
		R119 R142				
126	2	R89 R130	R-SMD,27KJ			
127	3	R14	R-SMD,3.3KJ			
		R82-83				
128	3	R32 R49	R-SMD,330J			
		R140				
129	4	R11 R29	R-SMD,33KJ			
		R41 R90				
130	2	R40 R118	R-SMD,390J			
131	1	R146	R-SMD,3KJ			
132	1	R69	BALK ,4.7/2W			
133	2	R102-103	R-SMD,4.7KJ			
134	3	R12 R72	R-SMD,4.7KJ			
		R131				
135	1	R144	R-SMD,			
			4.7KJ(2012)			
136	1	R93	R-SMD,430KJ			

137	2	R26 R116	R-SMD,470J			
138	3	R35	R-SMD,47J			
		R105-106				
139	8	R3 R31	R-SMD,47KJ			
		R39 R43				
		R55				
		R80-81				
		R132				
140	1	R104	R-SMD,5.6KJ			
141	1	R6	R-SMD,5.6KJ			
142	1	R56	R-SMD,56J			
143	2	R24 R34	R-SMD,56KJ			
144	1	R76	R-SMD,6.8KJ			
145	1	R122	R-SMD,680J			
146	1	R108	R-SMD,68J			
147	1	R109	R-SMD,			
			68J(2012)			
148	1	R25	R-SMD,68KJ			
149	1	R112	R-SMD,820J			
150	1	R17	R-SMD,82KJ			
151	1	Q21	TR-,KRA101S			
152	1	Q18	TR-,KRA102S			
153	2	Q25 Q35	TR-,KTA1241Y			
154	1	Q26	TTR,KTA1504Y			
155	2	Q5 Q34	T-220AB,B1366Y			
156	12	Q3-4 Q6-7	TR,KRC102S			
		Q12-14				
		Q19 Q22				
		Q24 Q28				
		Q37				
157	1	Q33	T-220,2SC2078E			
158	1	Q32	T- ,2SC2314F			

159	1	Q31	TR,			
			KTC3199GR			
160	9	Q1 Q10-11	T-220AB,C3875Y			
		Q15 Q20				
		Q23 Q27				
		Q29 Q36				
161	6	Q2 Q8-9	TR,KTC3880Y			
		Q16-17				
		Q30				
162	1	IC4	TDA2003,			
163	1	MAIN PCB	FR-4		MJ-800MA-GR	
164	1	OTP1	TRANS			
165	1	CH1	TRANS2,TR1			
166	1	VR6	SEMI 3P,470B			
167	1	VR2	SEMI 3P,1KB			
168	1	VR1	SEMI 3P,50KB			
169	1	VR3	SEMI 3P,5KB			
170	1	X1	XTL-11X4.5,			
			10.245MHZ	8PPM		
171	1	X2	XTL-11X4.5,			
			4.0MHz	20PPM		

